



Government of Western Australia
Department of Regional Development

December 1 2016



ROYALTIES
FOR REGIONS

ONGERUP GRAPEVINE

COMMUNITY NOTICES

ONGERUP FAMILY CHRISTMAS TREE: Save the date in your diaries- Saturday 17th December at 6:30pm at the complex.

GYM PACK UP Thursday 8th December 9am gym class, followed by a pack up and clean of the hall. Could all those who have been to gym and yoga please come and help. Many hands make light work. Following this we will go to Yongergnow for lunch.

TO GIVE AWAY: Wooden outdoor table – 210cm L x 89cm W.
(Jenny Ireland - 9828 2180.)

BEAUTY BUS Kirsty apologies to all her customers but she won't be back at Yongergnow until the New Year . Watch this space for dates.

P: 98 282325

F: 98 282326

E: ocrcgrapevine@gmail.com

W: ongerupcrc.net.au

COMING EVENTS

DECEMBER

3rd Xmas cooking

8th gym pack up

17th Christmas Tree

Merry Christmas



Xmas Cooking Classes



These are on again on December 3rd @ 9am at Yongergnow. We will be making fruit mince pies, xmas puddings and cakes. Bring your own ingredients and enjoy a fun morning whipping up your fabulous xmas creations. Let us know if you would like recipes emailed to you. You can make anything you like but Jan will be on hand to assist those wishing to make the cake and pudding recipes.

Xmas cooking for the kids!

This will be on again, all ingredients provided. Please ring and let us know how many will be attending (children and adults)



DECEMBER COUNCIL MEETING CHANGE OF MEETING TIME

The Shire of Gnowangerup hereby gives local public notice that the December Ordinary Council Meeting will commence at 10:00am on Wednesday 21st December 2016.




Ongerup Christmas Tree
 Saturday 17th December, 6pm
 @ The Ongerup Sporting Pavilion

Parents, please RSVP to the Ongerup CRC on 9828 2325 for more information and to ensure your space!

Please join us for a sausage sizzle and a short 'Carols by Candlelight' after Santa arrives in Ongerup this December!
 The event is FREE but there will be a \$5 donation per family, optional on the night

 Ongerup Christmas Tree is funded under the Families and Communities Programme by the Australian Government Department of Social Services.

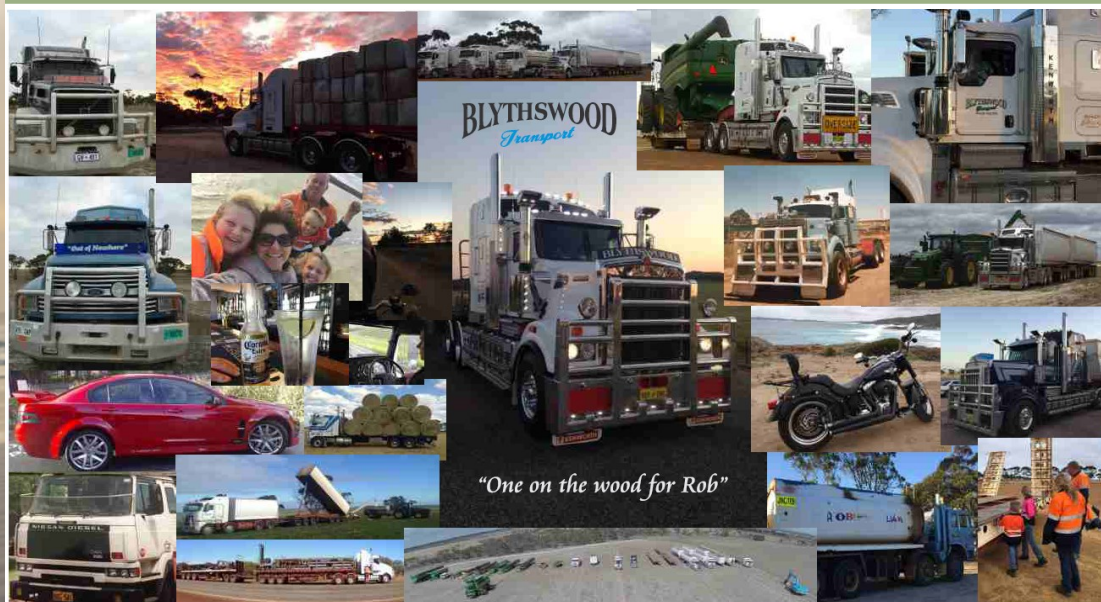



Gnowangerup Shire Council presents

Senior Citizens Christmas

Please join us on
Thursday 15th December 2016
10.00am -11.30am
 at the new Gnowangerup SES Building
 (Bell Street) for a morning of delicious food,
 entertainment and fantastic company!

Please contact the Shire by Monday 12th December 2016 on 9827 1007
 or gnpshire@gnowangerup.wa.gov.au to RSVP



"One on the wood for Rob"

Passionately working so hard to fulfil his
family's hopes, dreams and future.

Forever young

Forever in our hearts

Forever loved

Forever missed

3/6/1972 – 4/12/15

*We want to thank all those community
members who helped us get through
2015 harvest and supported us through
this difficult year. Many thanks for
your efforts of help and direction at
such a difficult time in our lives.*

Kylee, Kendra, Jorja, Liam and Dianne Hooper



ENTHUSIASTIC, ENERGETIC, ENTERPRISING, ENGAGING.....

and sadly

leaving Borden and her role with North Stirlings Pallinup Natural Resources

Please join the NSPNR Committee
at a community **farewell for Emma Reid**

Thursday 8 December

5pm – 7pm

Back garden of Borden's Harvest Café.

BYO drinks & platter to share



Bringing up Great Kids

An 'evidence based' reflective parenting program developed by the Australia Childhood Foundation. The program uses ideas of mindfulness and reflection to support parents to review and enhance patterns of communication with their child, to promote more respectful interactions and encourage the development of children's positive self-identity.

Using the metaphor of 'Messages' as a basis for building positive/child relationships, parents are encouraged to explore and reflect upon messages they received from their own experience of being parented. Parents are invited to give consideration to the ways in which these messages might be impacting on their own parenting style.



The program touches on children's developing emotional wellbeing including information on resiliency and self-regulation.

Bringing Up Great Kids Parenting Workshop

6 December 2016, 9.30am – 2.30pm

Nyabing Pavilion

To reserve your place, please contact Sarah or Ellaine by the 21 November. **Be quick as numbers are limited!**

Sarah Spink, 0429332240,
earlyyearsconsultant@outlook.com

Ellaine Hobley, jehobley@bigpond.com

Proudly brought to you by



Pingrup Community Resource Centre

Bringing Up Great Kids is funded under the Families and Communities Programme by the Australian Government Department of Social Services.

And it wouldn't be Christmas without the terrible cracker jokes!!!!

Why did the turkey join the band?

Because it had the drumsticks!

What do you get when you cross a snowman with a vampire?

Frostbite!

What do snowmen wear on their heads?

Ice caps!

How do snowmen get around?

They ride an icicle!

What song do you sing at a snowman's birthday party?

Freeze a jolly good fellow!

How does Good King Wenceslas like his pizzas?

One that's deep pan, crisp and even!

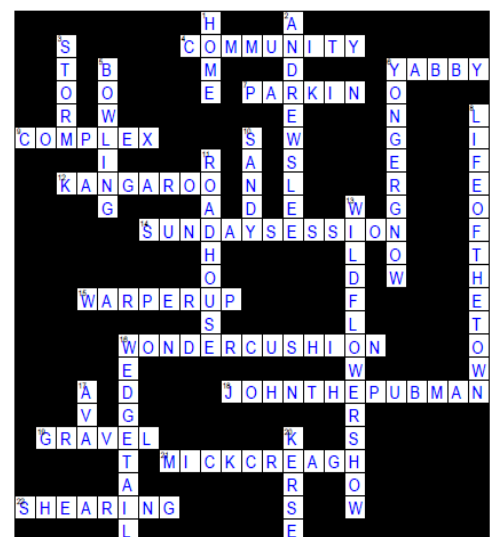
Who hides in the bakery at Christmas?

A mince spy!



and the answers to our cryptic crossword

Local Flavour



- | | |
|---|--|
| Across | Down |
| 4 No Mum struggled with city group living. (9) | 1 Springfield father loses last residence. (4) |
| 6 Why, before my eldest daughter makes a cocktail. (5) | 2 Farming son concealed by man drew sleeping. (6,4) |
| 7 Maneuvring vehicle with no gravity collects bales. (6) | 3 Violent weather takes by force. (5) |
| 9 Building involved connected parts. (7) | 5 We hear a redheaded Cat is after a Vaux sport. (7) |
| 12 Emblem is okay in angora mix. (8) | 6 No grey gown was altered at the centre. (10) |
| 14 First day sitting? (6,7) | 8 Heartbeat of Ongerup series. (4,2,3,4) |
| 15 Inside impure prawns should go back to the creek. (8) | 10 Artisan dye includes light brown. (5) |
| 16 Ed's unicorn who found insulating patchwork. (6,7) | 11 Oh adore us! Prepared for inn. (9) |
| 18 Affectionately known, this guy owns the establishment. (4,3,3,3) | 13 Reckless botanic production. (10,4) |
| 19 Judge's hammer goes around right road. (6) | 16 Golf club behind a bird? (9) |
| 21 Catholic lobster owner, say. (4,6) | 17 Either way you look at it she's a baby. (3) |
| 22 Clipping Sydney, you need it to listen. (8) | 20 Swear said a family! (5) |



FREE SCHOOL HOLIDAY/ SUMMER ACTIVITY

at Gnowangerup Community Swimming Pool

Proudly supported by the Shire of Gnowangerup and Synchro WA

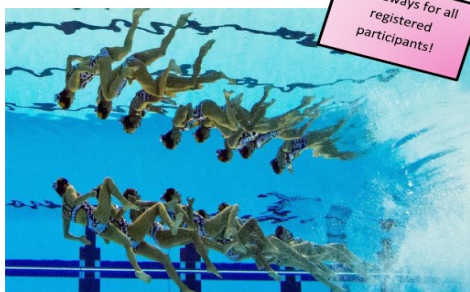
Come and Try Synchronized Swimming

Featuring a live demonstration by the WA members of the Australian Junior National Team

Need a new summer activity? Come to the pool to make a splash.

Free Entry to the Pool for Synchro Participants and Spectators

Please Note: You must register to be eligible to take part and access free entry.



Giveaways for all registered participants!

Saturday 17th December 2016

(Kids 6+) Session 1: 12pm – 1:30pm
(All Ages) Session 2: 3:00pm – 4:30pm

Sunday 18th December 2016

(Kids 6+) Session 1: 12pm – 1:30pm
(All Ages) Session 2: 3:00pm – 4:30pm

Register at the Gnowangerup Community Swimming Pool at 9827 1273.

For more information, please contact Anna at the Shire 9827 1007, email anna.boschman@gnowangerup.wa.gov.au

DIRECT LIGHTING ALBANY

154 Albany Highway, Albany WA, 6330
P: (08) 9842 1313 F: 9842 1017
E: gregs@directlightingalbany.com.au
W: www.directlightingalbany.com.au

Experts in Lights, light globes and all types of light fittings.



We have thousands of globes in stock including globes for

- Ovens
- Sheds
- Led Globes
- Heat lamps
- Fridges etc

Order online at www.directlightingalbany.com.au or call us on 08 9842 1313



Albany Freight Lines

A division of Freight Lines Group are carting all your bulk freight in the local and surrounding areas.

Albany Freight Lines has purchased Halls Haulage from Brian and Dianne Hall and will continue to service the Ongerup and surrounding area.

HARVEST CARTING
FERTILIZER
LIME
LIQUID FERTILIZER
FUEL

It's not too late to
book in your loads
with us today for
this year's harvest

Please contact the Albany office on 9841 4300 or
Michael Harding on 0427 181 274 to book in your load today.

DECEMBER 2016

Mon	Tue	Wed	Thu	Fri	Sat	Sun
				2 Friday Night Bowls	3 Rael bday <i>Xmas Cooking</i>	4 Morris bday Grant bday
5	6	7	8 Hayley bday Gym pack up	9 Friday Night Bowls	10 Indigo bday 🎈	11 🎈
12	13	14	15 Benedict bday Marnie bday 🎈	16 Friday Night Bowls	17 Don bday <i>Christmas Tree</i> 🎈	18
19 Beau/Rohan George bday 🎈	20	21 Merv bday 🎈	22 🎈	23	24 Mark bday 🎈	25 Xmas day
26 Sandy bday	27	28	29	30	31 🎈	

Yongergnow-Ongerup Community Resource Centre Christmas Opening Hours

Saturday 24th December—CLOSED

Sunday 25th December—CLOSED

Monday 26th December—CLOSED

Tuesday 27th December—CLOSED

As of Wednesday 28th December we will be
back to our normal trading hours of:

Tuesday to Saturday 9am—4pm



Merry Christmas!!



The Shire of Gnowangerup would like to inform all residents that the Shire Administration Office and Depot will be closed from 11:30am on Wednesday 21st December 2016.

BUSINESS HOURS CHRISTMAS/ NEW YEAR

The Shire of Gnowangerup Administration Office and Depot will be closed from 4:30pm, Friday 23rd December 2016 reopening for normal business hours 9:00am Tuesday 3rd January 2017.

Gnowangerup and Ongerup Libraries will be closed from Friday 23rd December 2016 reopening Tuesday 3rd January 2017.

EMERGENCY CONTACTS:

Shelley Pike: 0428 982 710
Viv Fordham Lamont: 0427 193 880
Yvette Wheatcroft: 0439 791 925
John Skinner: 0408 070 754

HARVEST & VEHICLE MOVEMENT BAN

A Shire wide Harvest and Vehicle Movement Ban applies for Christmas Day. Please phone the Harvest and Vehicle Movement Ban Hotline on 9827 1711 for updated information.

RUBBISH TIP CLOSED

The Shire of Gnowangerup Rubbish tip will be closed on Sunday 25th December 2016.



Councillors and Staff would like to wish all residents and ratepayers a safe and happy festive season.